



Experience the Difference at Gateway Commerce Center

a development project by
Trammell Crow Company

Gateway Delivers.

- Gateway Commerce Center is a world-class distribution park.
- ▶ Perfectly centered in the United States and strategically located in the St. Louis region
 - ▶ Significant incentive programs and low operating costs
 - ▶ Abundant skilled workforce
 - ▶ Extensive services and amenities on site
 - ▶ Available land and utilities in place to accommodate virtually any size or use
 - ▶ Blue-chip occupants and momentum for growth
 - ▶ Balanced freight market providing transportation cost savings
 - ▶ Excellent interstate highway infrastructure and connectivity
 - ▶ Convenient access to air cargo, inland port, and rail facilities

For More Information, Contact:

Terry Stieve, SIOR +1 314 338 2088 terry.stieve@am.jll.com	Katie Haywood +1 314 261 7378 katie.haywood@am.jll.com
---	---

1 Metropolitan Square | St. Louis, Missouri 63102
www.GatewayDelivers.com



Gateway Commerce Center

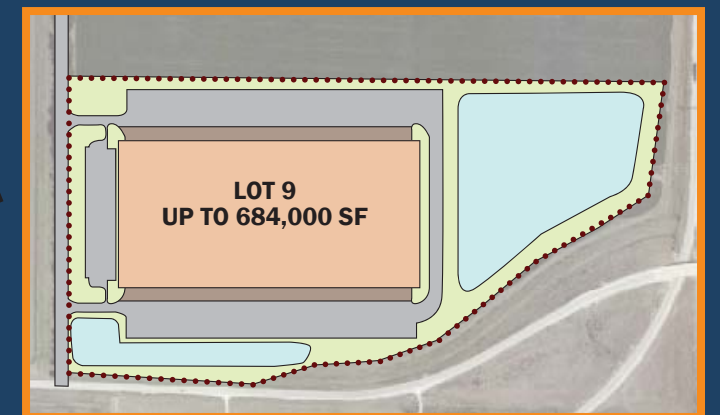
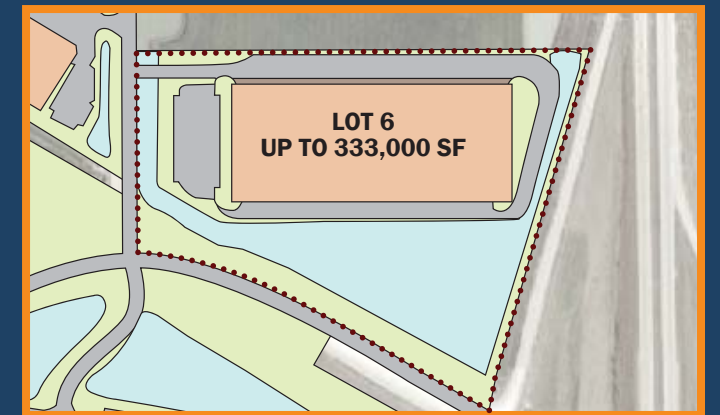
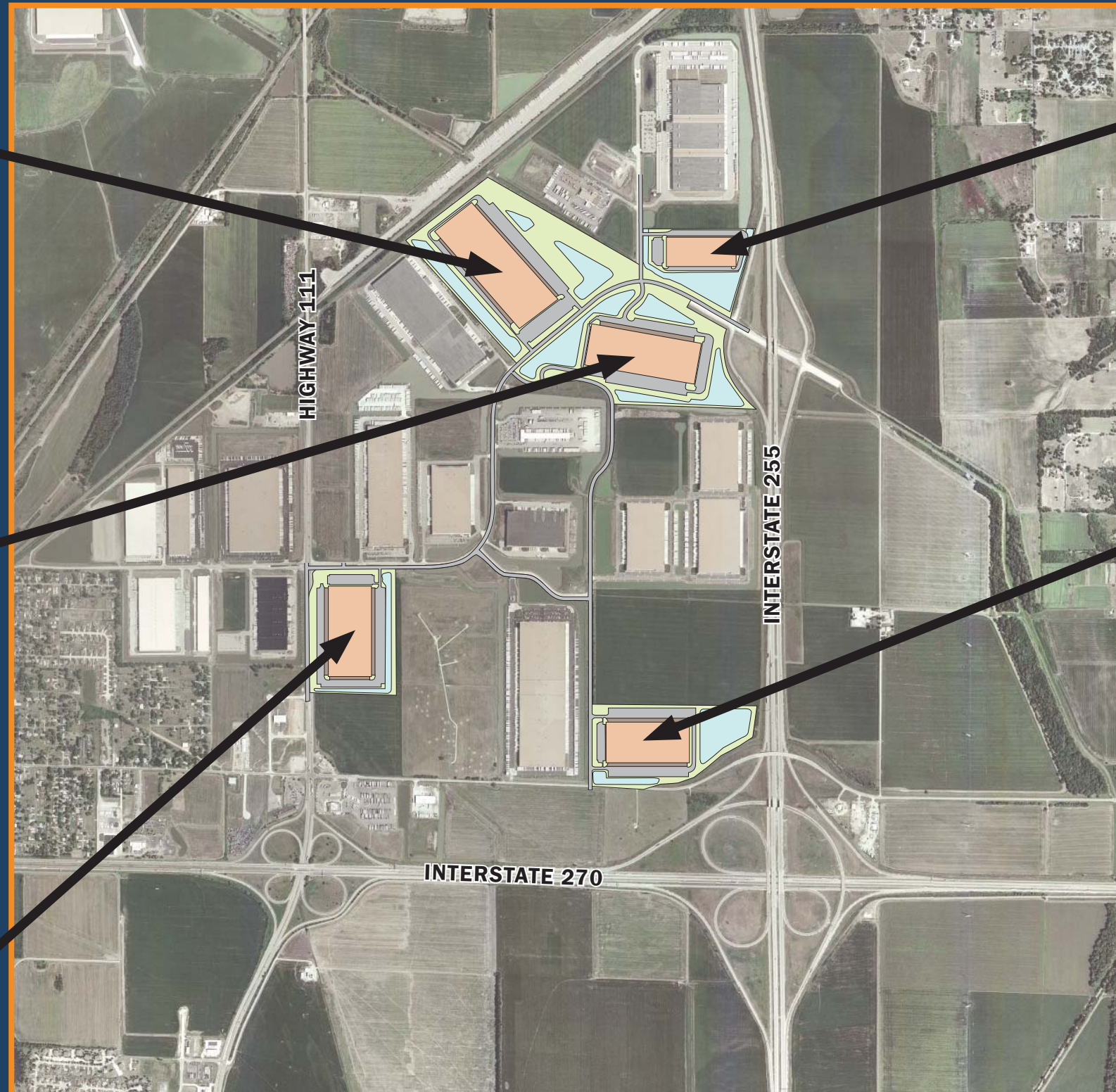
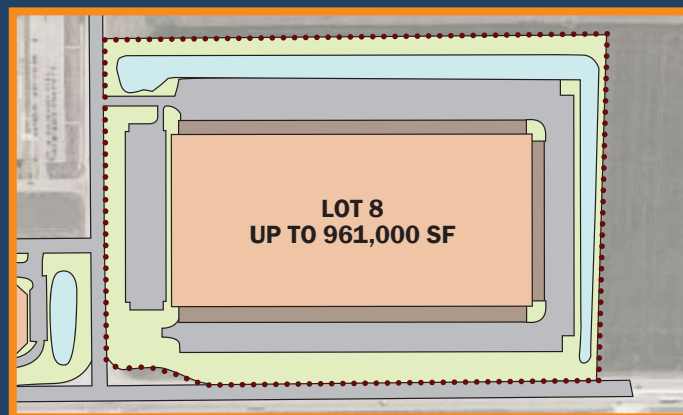
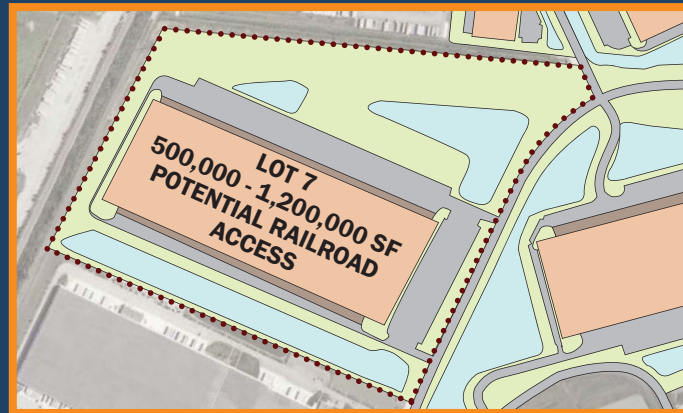
Build-to-Suit Sites Available

- ▶ Up to 1,200,000 SF built to your specifications
- ▶ Ceiling heights from 28' to 38'
- ▶ Office finish to your design
- ▶ Potential rail access (Norfolk Southern Railroad)
- ▶ Above-standard car and trailer parking
- ▶ Strict park indentures
- ▶ Stable long-term ownership
- ▶ Land parcels available for purchase





Experience the Difference at Gateway Commerce Center



Join Hershey, Unilever, Procter & Gamble, Dial, GENCO, Ozburn-Hessey Logistics, USF Logistics, Walgreens, Save-A-Lot and Schneider National in our regions premier distribution park

a development project by
Trammell Crow Company